

GORDON ROAD, NUNHEAD, SE15

FREEHOLD

£1,250,000

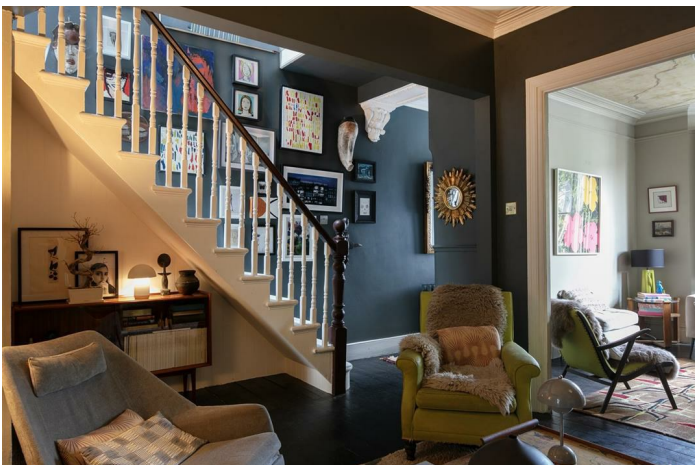


SPEC

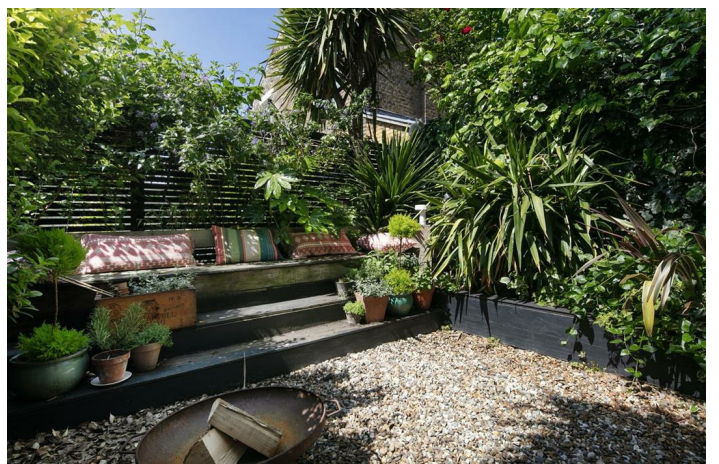
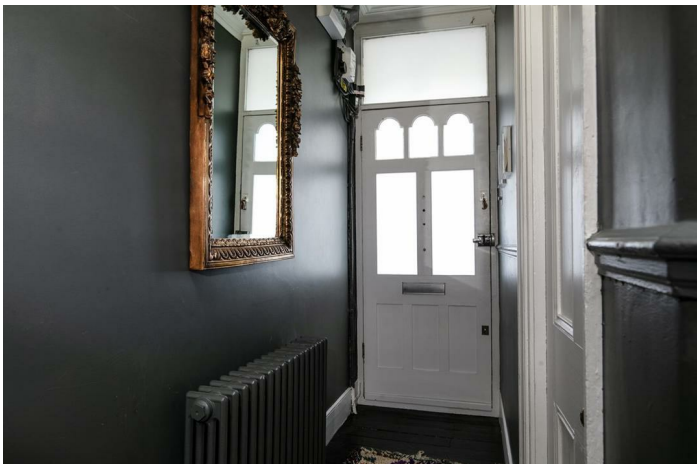
Bedrooms : 3
Receptions : 1
Bathrooms : 1

FEATURES

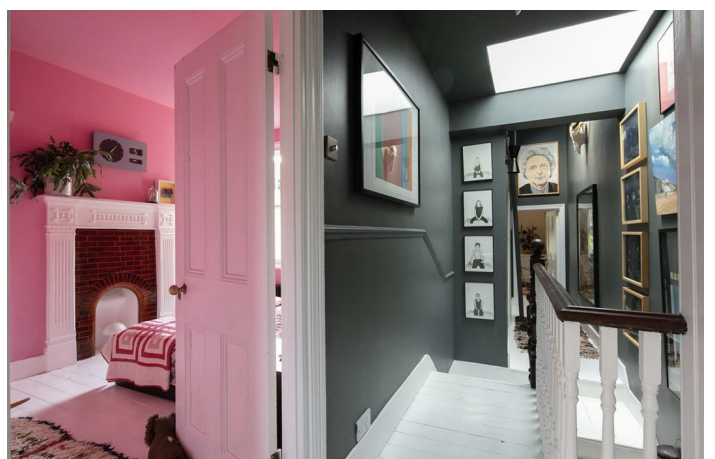
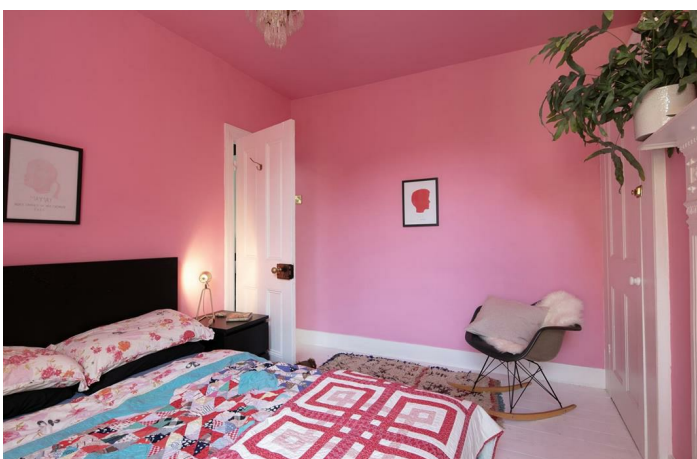
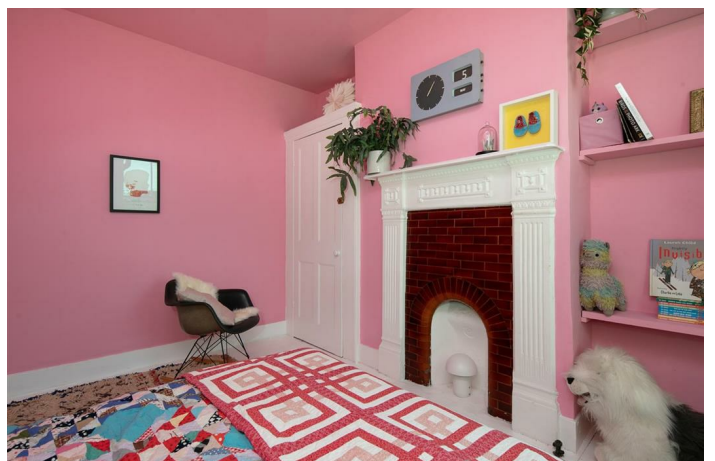
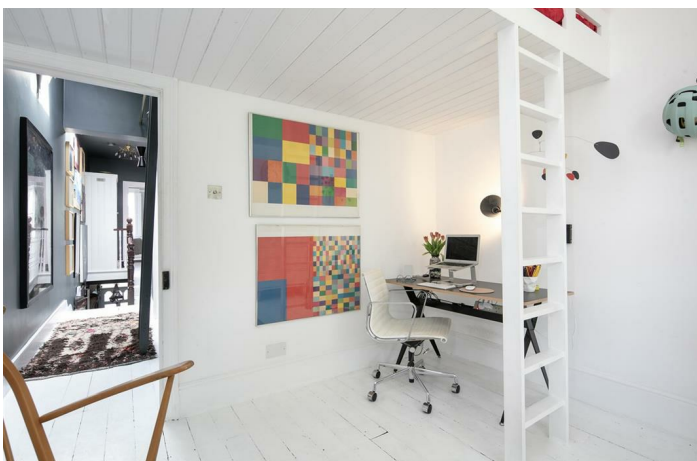
Stunning Landscaped Rear Garden
Wonderful Original Features
Full-Width Kitchen Extension
Boarded Loft With Velux
Freehold
CASH BUYERS ONLY



GORDON ROAD SE15
FREEHOLD



GORDON ROAD SE15
FREEHOLD



GORDON ROAD SE15
FREEHOLD



GORDON ROAD SE15
FREEHOLD



CASH BUYERS ONLY*

Superb Victorian Three Bedroom Home With Original Features and Impressive Kitchen Extension - CHAIN FREE.

*Works are required to obtain a Building Completion Certificate, approx. £48,000. Please contact us for more information

This larger than average three bedroom Victorian home boasts perfectly chosen, sympathetic styling, a tranquil, leafy garden and abundant original features including fireplaces, cornicing, ceiling roses and period wooden storage units. The accommodation, over two magnificent floors, comprises a huge open plan living area, full-width kitchen extension with Miele appliances and Mercury range, three proper double bedrooms, family bathroom and handy wc. A boarded loft space with Velux supplies excellent storage and exciting opportunities to augment the accommodation (subject to planning permission). The split level rear garden is particularly lovely and is awash with mature leafiness. Location-wise, you are close to three stations: Nunhead offers regular services to Victoria and Blackfriars, Queens Road Peckham will get you into London Bridge in five minutes (and Victoria in slightly longer) while Peckham Rye serves all three London termini. The two latter stations each also enjoy the London Overground line. Nunhead Lane, at the southern end of the road past the green, is a good place for local grocery shopping - it has a wet fish shop, a proper bakery and a greengrocer.

An original tessellated path invites you through tasteful black railings. High hedging affords your pretty front garden privacy and shade and there's a shrubbery-topped bike storage unit. An arched recessed portico with more gorgeous tiling reveals the original door (with pretty brass knocker). Inside you find an inviting hall enjoying Farrow and Ball's 'Downpipe' and crisp white coving and corbels. The double living space runs open-plan to create a magical sense of width and depth. To the front you enjoy abundant lounging and a super wide bay. Original charm includes wooden shutters, picture rails, cornicing and a glorious original feature fireplace with fairytale hearth! Antique plastering overhead complete the look. A further seating/formal dining space to the rear enjoys more cornicing, original storage and another show-stopping feature fireplace. The radiators throughout the house are cast iron triple column.

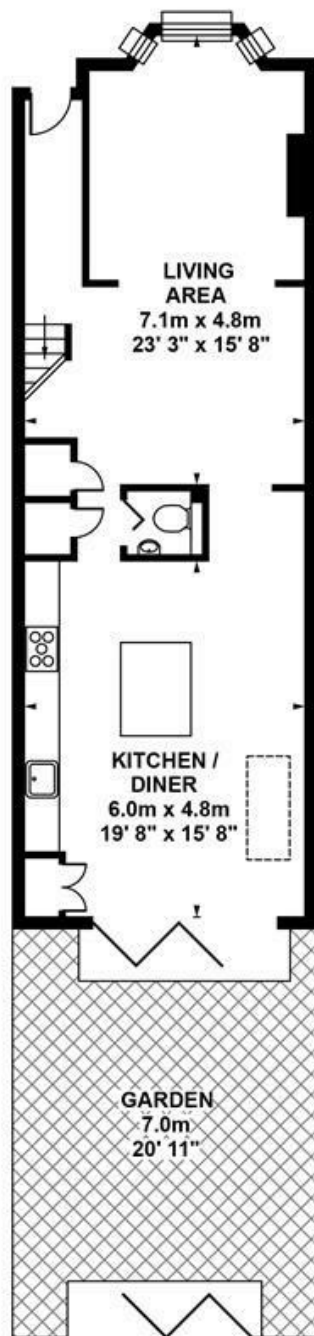
The superb kitchen/diner has been designed to maximise the best of the westerly light. It affords unbelievable dining, cooking and entertaining space. Reclaimed vintage herringbone hardwood flooring run the full space and there's a splendid antique brass-topped island for good measure. This faces the Mercury gas cooker and there's a full range of Miele appliances. The room has tasteful stainless steel sockets and floor lamps which are seamlessly operated by an integrated wall switch. A large skylight over the family dining space soaks in all the good vibes and there's a triple-glazed floor to ceiling sliding glass door to the rear. This frames a most peaceful garden vista. Outside you find a wonderful patio space leading to a bespoke sunken gravel bed and further rear wooden seating space - with handy storage underneath. There is an impressive array of mature greenery including cordylines, wisteria, ivy and a magnificent eucalyptus tree. It supplies dappled shade and a uniquely aromatic fragrance.

Back inside you find an original staircase rising upward to a long landing, kept light and airy by a large original skylight. There's tonnes of hanging space for your larger works of art and a vaulted corridor to the rear accommodating a wonderful library. The master bedroom is simply delightful! Stretching full-width and with a wide bay window and additional sash - the space enjoys more original shutters. An imposing period feature fireplace with decorative tiling and hearth will will you at hello! Deep bespoke storage complete the charm offensive. Bedroom two is cute as a button and pretty in pink with more original storage, another feature fireplace and a large rear facing sash window. The family bathroom is further along the landing and has a period roll-top bath and a fab trough-style wash hand basin. A vaulted ceiling with Velux adds to the light from the side aspect frosted sash window. Last but not least comes a wonderful rear facing third double bedroom with sublime garden views and a nifty raised sleeping mezzanine.

You're within a 10-15 minute walk of all that Peckham the massively popular 'Frank's Cafe' - great for a summer pint and some fab city views. Peckham Bazaar is a much-loved local watering hole - it's just a moment's stroll. Or, for any amount of exotic produce, nip down to Rye Lane which is equally close. The Bussey Building offers a great mix of culture and social fun. Nearby Lordship Lane has just about everything to save you heading to town - boutiques, cafe's, deli's, pubs and clubs - it's a real plus. Peckham Rye Park or beautiful, peaceful Nunhead Cemetery are close by for a Sunday stroll. Sydenham Hill Woods is a quick drive for yet more leafy r&r as is the Horniman Museum, South London Gallery and the Hannah Barry Gallery.

Tenure: Freehold

Council Tax Band: D



GROUND FLOOR

Approximate. internal area :
70.13 sqm / 754 sq ft



FIRST FLOOR

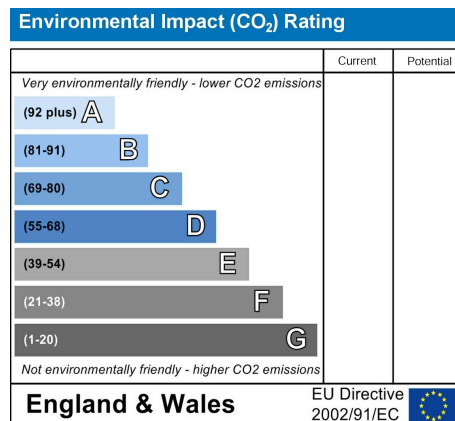
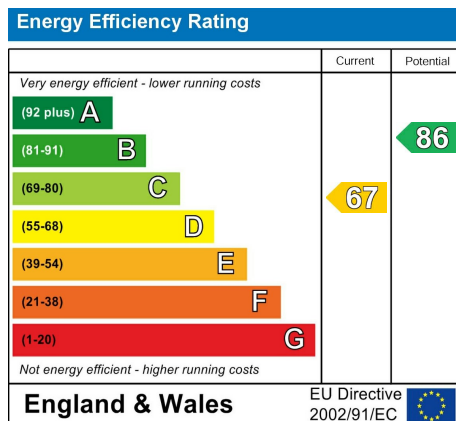
Approximate. internal area :
60.00 sqm / 646 sq ft

TOTAL APPROX FLOOR AREA

Approximate. internal area : 130.13 sqm / 1400 sq ft
Measurements for guidance only / Not to scale



GORDON ROAD SE15
FREEHOLD



All information supplied should be checked by your solicitor prior to exchange of contracts. Lease details, measurements, floorplans and photographs are displayed for guide purposes only. We have not carried out a structural survey and the services, appliances and specific settings have not been tested.

